



BRIO.REPORT™



Industrial-Strength Enterprise Reporting



B2E

Reliable. Flexible. Scalable. Performance. This is what it takes to run an effective, high-volume enterprise reporting system. With e-business information demands making enterprise reporting more important than ever, add to the list "if it breaks, we die." It's a cut-throat world out there, so why gamble with a system that can't stand the heat? Brio.Report is already hard at work at over 50% of the Fortune 1000.

B2B

Information is the key to success in today's B2B landscape. And not just for the top analysts in an organization, but for every individual up and down the supply chain. That means data must be easily accessed and extracted from any enterprise or Web-based source, transformed into actionable information, with the results broadcast to everyone who needs them—in any format: HTML, XML, printed report, Adobe Acrobat (PDF), text, email, PostScript, spreadsheet, even wireless...

B2C

Let's face it, many companies have no hope of surviving in the future unless they figure out how to respond quickly and reliably to customer demands—and it all starts with enterprise reporting capabilities you can depend on. Because if those reports aren't delivered the minute they are expected, customers won't come beating down your door, they'll be pounding on the door of your competitor.

Enterprise Reporting



Around the world, forward-thinking companies are implementing B2B strategies that fully exploit the exchange of information and analytics across the Web—not only to attract and acquire customers, but also to increase customer satisfaction, lower costs, and improve profit margins.

These are the same companies that over the past few years have implemented strategic data warehouses and data marts; enterprise resource planning (ERP), sales force automation (SFA), and customer relationship management (CRM) systems; e-commerce and hosted applications; and a host of other new, Web-enabled enterprise applications. These information systems are strategic requirements to successfully run their business.

Now it's time to unlock the power of the information that is contained within these applications and deliver its value across the entire information supply chain—not only within the confines of the organization but also outside the firewall to include B2B trading partners, suppliers, and customers.

One of the keys to success in this B2B world is the ability to quickly access, extract, and format enterprise and supply chain information into high-quality, professional business reports. These reports range from simple trend reports and summaries to mission-critical operational reports—such as pay checks and bank account information—that access large volumes of data from production databases, legacy applications, and data warehouses, as well as extranet and intranet environments.

Ultimately, this requires the use of a real-time enterprise reporting environment designed specifically for extracting and transforming enterprise and B2B data into actionable insight. A real-time enterprise reporting environment must:

- Support mission-critical, complex report processing
- Provide extensive platform coverage to support the range of B2B data sources and report formats
- Be easy to use and implement to accommodate ever-changing e-business models
- Scale to the largest B2B environments with a robust and reliable architecture

And that's what Brio.Report delivers.

INFOWORLD, JANUARY 21, 2000. *"If your e-business does not already have a reporting infrastructure, you should consider an enterprise reporting system if your goal is to disseminate information to the broadest possible audience, or if you require the power of multimedia content. Your enterprise reporting investment will result in faster, more dynamic reporting that will improve communication, enhance decision-making, and reduce costs."*

Real-Time, Industrial-Strength Ent



PREMIER DATA TRANSFORMATION AND REPORTING.

Brio.Report delivers the industry's premier enterprise data transformation and reporting environment that empowers everyone in the extended enterprise to easily access and utilize the information they need to make better business decisions. Brio.Report transforms data into valuable information by generating highly distributable reports of any type, against any enterprise data source, across any enterprise operating system.

By enabling report users across the enterprise to glean insightful information and analysis about market trends, customers, competitors, and more, Brio.Report enables every member of your organization—both inside and outside the firewall—to arm themselves with the knowledge required to be more competitive, customer-centric, and responsive to change.

IT'S ANYTHING YOU NEED IT TO BE. No matter what your enterprise reporting and B2B analysis needs, Brio.Report has the productivity features you require. Brio.Report supports the full spectrum of users, from end users who gather data, to power users who create reports, to IT developers who

create the reports others use, to IT administrators who maintain a distributed system.

The high-performance, server-based reporting environment of Brio.Report provides you with the industry's broadest platform, database, and operating system coverage. It's specifically designed to handle both high-volume reporting jobs and highly interactive reports—whether you need to publish information out to the corporate intranet or extranet, process production reports, or populate a data warehouse or other large-scale database environments.

Brio.Report offers a new level of interactive reporting that combines the analytical capabilities of OLAP tools with the power of enterprise reporting. This capability significantly boosts end user productivity by delivering both the information and the tools necessary for analyzing that information in real time—resulting in faster and more effective decision making.

MANAGEDCOMP *"Brio.Report is an industrial-strength solution that enables us to transform our intranet and extranet data into actionable information. It adds value to our information supply chain by allowing users to make intelligent, decentralized decisions across our extended enterprise—which includes ManagedComp's internal employees, external brokers, and corporate clients."* —David Hamilton, Vice President of Information Technology

Enterprise Reporting



FLEXIBLE ENTERPRISE REPORTING

Brio.Report quickly and easily creates, executes, and maintains any type of report—from simple operational reports to mission-critical production reports that access large volumes of data in operational databases, legacy applications and operational data stores. Here are just some of the types of reports that can be created with Brio.Report:

- Pager notification of flight changes
- Stock quotes retrieved from cellular phones
- Telephone/utility bills
- Complex financial statements
- Stock trading information
- Budget consolidations
- Bank statements
- Payroll checks
- Aging reports
- Lab trial reports
- MRP reports

HIGH-VELOCITY B2B REPORTING. Brio.Report has native support and optimization for over 60 combinations of databases and operating environments to ensure the best possible performance whenever and wherever data access and reporting is required in your information supply chain. In fact, the open, thin-client architecture runs on any enterprise host server—ensuring the most efficient use of processing and bandwidth resources—and can be used to report against any amount of operational or warehoused data.

BUILT-IN FLEXIBILITY. With its powerful and flexible graphical development environment, Brio.Report enables you to rapidly create and deploy innovative enterprise and B2B reporting solutions. And its comprehensive platform coverage gives you the ultimate flexibility to transform all your e-business data into actionable information—enabling you to easily access information from any data source and quickly generate enterprise-caliber reports of any complexity, in any layout or output, and on any platform.

UNMATCHED SCALABILITY. Brio.Report provides all the power and scalability required to meet even the toughest enterprise and B2B report processing demands. In fact, only Brio.Report supports every major enterprise information source (including XML, WML, RDBMS, multidimensional, object-based, and others) to ensure your ability to write and deploy reports anywhere, run them anywhere, and print them anywhere—inside and outside the firewall. This also enables you to leverage and protect your existing client/server and Web-based IT investments.

PROVEN, ROCK-SOLID RELIABILITY. Brio.Report is built upon a customer- and industry-proven data processing/transformation platform that makes it the most dependable choice for complex, distributed enterprise and B2B reporting solutions. In fact, Brio's SQR Server is widely recognized as the most powerful report processing and data transformation technology in the marketplace—with over half of the Fortune 500 companies already using SQR Server to meet their toughest enterprise and B2B reporting demands.

Brio.Report Components

ANY FORMAT, ANYWHERE, ANY TIME

Brio.Report handles any layout complexity, including the incorporation of charts, graphs, logos, bitmaps, bar codes, and other images. It also supports virtually any report output format—including XML, WML, HTML, laser printers, PDF, text, postscript, email, FAX, and SPF (SQR's portable output format).



BRIO.REPORT BUILDER

A powerful and flexible Windows-based graphical development tool, Brio.Report Builder enables you to rapidly create enterprise and B2B reports via an easy, point-and-click interface. With Brio.Report Builder, you can easily embed visual analysis capabilities right into the interactive reports you create, reducing the amount of time spent customizing and personalizing reports for individual end users.

The Brio.Report Builder includes an intuitive graphical query builder (with support for multiple queries and nested sub-queries) and support for sophisticated reporting capabilities such as dynamic SQL, load lookups, report headers/footers, and exception notification. In addition, Brio.Report Builder, combined with the robust report processing capabilities of Brio's SQR Server, uniquely meets the needs of information producers throughout the enterprise, including IT report developers and departmental power users.

BRIO.REPORT VIEWER

Brio.Report Viewer, the report viewing utility for Windows clients, displays screen previews of reports prior to printing and rendering the final output. With Brio.Report Viewer, you can integrate features such as page navigation, scrolling, zooming, printing, searching, and viewing of files directly into Windows applications, which ultimately provides end users with easy viewing and printing of reports from their desktop.

BRIO.INSIGHT

Brio.Insight is a Web browser plug-in that provides optional Web-based interactive analysis and report viewing capabilities for data delivered within SQR-based reports.

BRIO.REPORT SQR SERVER

Brio's SQR Server is widely recognized as the most powerful report processing and data manipulation technology in the marketplace. SQR Server is the only enterprise reporting solution with native access to over 60 combinations of databases and operating environments. And it provides the industry's most robust and scalable engine for extracting, transforming, and distributing data throughout the virtual enterprise. In addition, the latest version of SQR Server has been significantly enhanced to support an expanded color model with powerful business charts, XML input/output, and multidimensional database access.

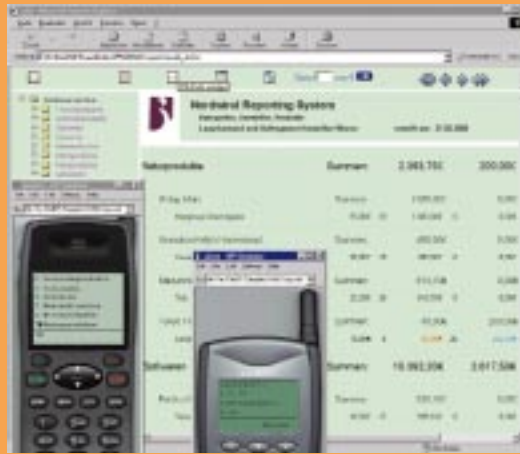
With SQR Server, you can take advantage of the power of Brio.Report as a high-level programming language. By adding procedural language and control to SQL queries and commands, you can write other types of applications—including database manipulation and maintenance, table load and unload, and interactive query, and display.

BRIO.REPORT PERSONAL SQR

Personal SQR is a single-user, Windows-based emulation of SQR Server, which is available for local PC-based reporting tasks and for testing SQR applications prior to deployment on a back-end SQR Server.

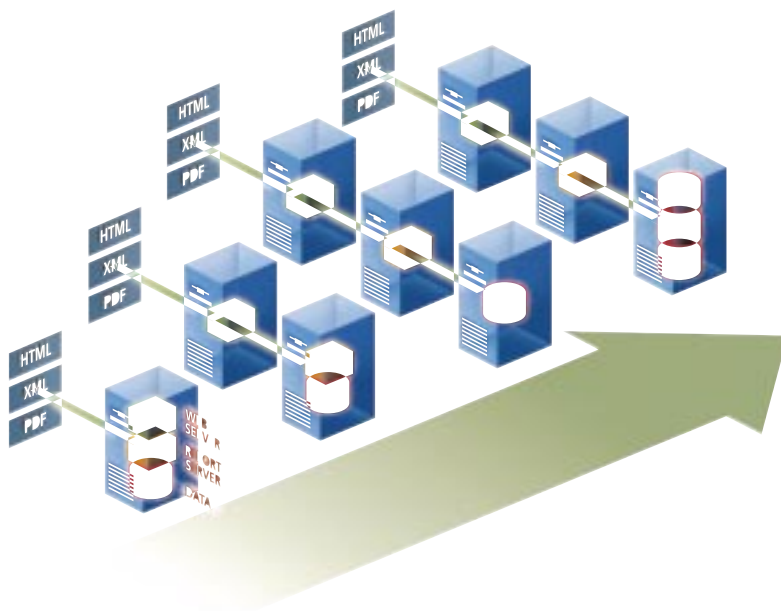
BRIO.REPORT ACTIVATOR

Brio.Report Activator provides a set of integration components and ActiveX controls designed to enable developers to easily embed SQR functionality into their commercial and custom Microsoft Windows applications—allowing users to take advantage of flexible data-access and reporting features within those applications to pull information from databases quickly and easily.

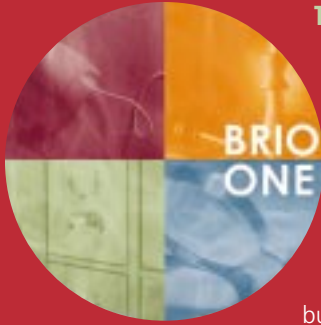


BRIO.REPORT KEY FEATURES

- Platform independent output
- Optimized for all major databases
- Available on over 60 platforms
- Native drivers for every major database environment
- Procedural extensions to SQL
- Comprehensive XML read and write capabilities
- Supports tabular, nested control break, cross tabular, and master/detail reports
- Incorporates charts, graphs, logos, bitmaps, bar codes, and other images
- Supports numerous report output formats including HTML, XML, WML, paper, text, postscript, email, FAX, PDF, SPF, and others
- Enables server-based report execution—even from the desktop
- Single pass of the database, multiple output files and transactions
- Report processing and logic execution on the database server
- Interactive report development and deployment environment
- Full compatibility with the latest versions of Windows, UNIX, and other new platforms
- Enhanced RGB color model and business graphics
- Embedded URL support within report output files
- Tight Integration with Brio.Portal and Brio.Enterprise



Brio.Report easily scales from a single department deployment up to a highly-distributed B2B environment.



THE FIRST COMPLETE, ANALYTIC INFRASTRUCTURE FOR E-BUSINESS. Brio ONE delivers on-demand analytics and timely information to everyone who needs it to make better business decisions. Brio ONE meets the complete range of decision-processing needs—including those of internal employees as well as external customers, integrated supply chain partners and distribution alliances. Brio ONE combines integrated business intelligence, enterprise reporting, comprehensive information portals, and analytic applications for intranet, extranet, client/server, and hosted application environments.

Brio ONE helps organizations derive higher business value from their B2B information sources, including enterprise resource planning (ERP), sales force automation (SFA), and customer relationship management (CRM) applications, production systems, analytic applications and business spreadsheets, data marts, data warehouses, intranets, extranets, and others. With Brio ONE, organizations can deliver analytics on-demand and 'right now' insight to users across the virtual enterprise so they can be more competitive, customer-centric, and responsive—as a group—to market shifts and new opportunities.

The Brio ONE analytic solution is comprised of the following integrated product line solutions:

BRIO.ENTERPRISE™, an integrated suite of powerful and easy-to-use business intelligence tools for query, OLAP analysis, and analytical reporting across the virtual enterprise.

BRIO.REPORT™, the backbone of Brio ONE and the industry's premier enterprise data transformation and reporting environment delivering unmatched performance, scalability, flexibility, and reliability.

BRIO.PORTAL™, the most comprehensive enterprise information portal for dynamic, personalized, self-service, and relevant access to any enterprise or B2B information source, no matter where it resides.

BRIO.APPLICATIONS™, a comprehensive and robust analytic application suite designed to deliver a flexible, iterative, and evolutionary framework for managing the top line and optimizing revenues and business performance.

USA HEADQUARTERS
4980 Great America Parkway
Santa Clara, CA 95054

1 877 289 2746

CANADA
LATIN AMERICA

1 416 945 6611 x435
+55 11 5185 2788

ASIA PACIFIC
JAPAN

+61 2 9964 9533
+81 3 5322 2827

EMEA
FRANCE
GERMANY

+33 1 55 69 36 00
+33 1 39 44 73 73
+49 89 368891 0

UNITED KINGDOM

+44 1932 878000

www.brio.com

